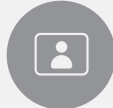




QR
Feature



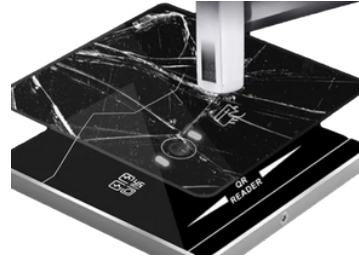
ID Card
Feature



NFC
Feature



Shatter
Resistant Screen



Card Type	EM Card/IC Card
Barcode Type	Qr, One-dimensional code
Connection	Wiegand/RS232/RS485
Reading Direction (Barcode)	45° inclined plane with lens
Read Feature	Auto-induction, beep hint
Reading Distance (Card)	3~6 cm
Reading Distance (Barcode)	0~20 cm
Reading Speed	200ms
Working Voltage	5~15v
Working Current	800mA
Operating Humidity	10%~90%
Operating Temperature	0°C-45°C
Operating System	WindowsXP/7/8/10, Linux
Material	Tempered glass (code window)
Size	86*86*8 mm
Weight	150g

